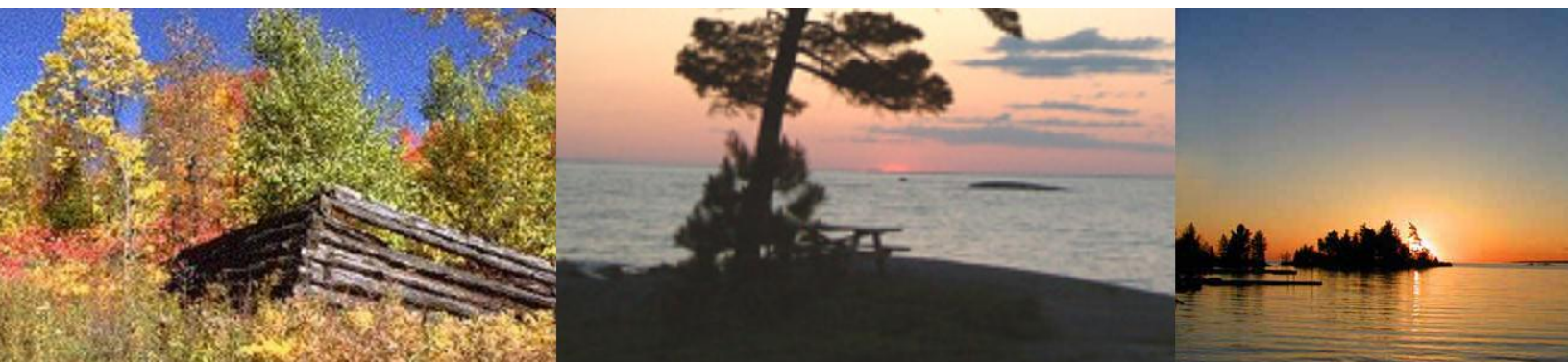


**COMMUNITY PROFILE
2008
(Revised August, 2011)**



**45 BEATTY STREET
NIPISSING ONTARIO
P0H 1W0**

Phone 705-724-2144

Fax 705-724-5385

Email: admin@nipissingtownship.com

Web Site: www.nipissingtownship.com

Table of Contents

Message From the Mayor and Council.....	1
<i>From the Office of the Mayor</i>	<i>1</i>
<i>From Dave Yemm, Operations Superintendent.....</i>	<i>2</i>
<i>From Jeff Peppin, Chief Building Official</i>	<i>2</i>
Distance From Centres and Location Map	3
A Brief History of the Township of Nipissing	4
The Township of Nipissing Community Profile.....	5
Staff	5
<i>Planning Assist./CEMC/EDO</i>	<i>6</i>
Transportation	7
<i>Bus</i>	<i>7</i>
<i>Airport.....</i>	<i>8</i>
Communications.....	8
Education	9
Climate.....	9
Geography.....	9
Industries / Businesses	10
Seasonal	11
<i>Maple Syrup Producers.....</i>	<i>11</i>
<i>Honey Farms.....</i>	<i>11</i>
Farms	11
Trades	12
<i>Contractors.....</i>	<i>12</i>
<i>Carpenters</i>	<i>12</i>
<i>Electrician.....</i>	<i>12</i>
<i>Masonry</i>	<i>12</i>
<i>Signs</i>	<i>13</i>
<i>Kitchen</i>	<i>13</i>
<i>Painting</i>	<i>13</i>
Taxes TOWNSHIP OF NIPISSING	13
Building Permit Fees.....	14
<i>Residential and Commercial</i>	<i>14</i>
Landfill	15
<i>Waste Disposal and Recycling</i>	<i>15</i>
<i>Hazardous Waste Disposal.....</i>	<i>15</i>
<i>Tipping Fees:</i>	<i>16</i>
<i>Accepted Recyclable Materials – NO RECYCLABLES IN REGULAR WASTE!</i>	<i>16</i>
Emergency Services	17
Ambulance	17
Ontario Provincial Police	17

Fire Stations	17
Resorts	18
Public Facilities.....	20
<i>Public Beaches</i>	<i>20</i>
<i>Boat Launches</i>	<i>20</i>
Marinas	20
Cemeteries	20
Museums	21
Post Offices.....	21
Community Centres	21
Churches	21
Stores / General Supplies	22
Dog Tag - License.....	22
Township of Nipissing Community Centre	22
<i>Type of Use and User Fees</i>	<i>22</i>
<i>Rental Information.....</i>	<i>23</i>
<i>Bookings / Payment</i>	<i>25</i>
TOWNSHIP OF NIPISSING Fitness Centre	25

MESSAGE FROM THE MAYOR AND COUNCIL

The Township of Nipissing was incorporated in 1888. The two Townships of Gurd and Nipissing are nestled among the pines and maples of the Near North. The only major change in the territory was the annexation of the unincorporated township of Gurd in 1970.

Today the Township of Nipissing can boast about a number of environmental amenities that include clean air, pristine wilderness, clean fresh water lakes, serenity and lots of open space. Tie that in with the friendly people that live in the Township and you have everything you would want to live here. Another attraction includes the diversity of seasons where one can be lured by a number of winter activities, the fresh sights and smells of spring, the warm refreshing summers and the breathtaking colours offered during the fall season.

Working with the Strategic Plan (2008), Council continues to encourage people to invest in the Township because of the wonderful lifestyle it offers. Only 25 – 30 minutes from the City of North Bay and 15 – 20 minutes from the Trans Canada Highway and the rest of the world, the Township of Nipissing is open for business.

As you browse through the profile, we are sure you will agree that the Township has the simple amenities one needs to enjoy a lifestyle that few areas can match. We hope you consider the Township of Nipissing if you are moving into or visiting the Near North.

Mayor:

Pat Haufe

Council Members:

Tom Piper, Deputy Mayor

Tom Butler

Dougal Culham

Liz Smith

From the Office of the Mayor

MESSAGE FROM THE MAYOR:

Many of you have been wondering how the economic downturn has affected the Township of Nipissing finances. Over the past decades, we have always operated in a fiscally responsible manner. This is now paying off as we have sufficient reserves to take advantage of the Federal and Provincial government stimulus funding opportunities available.

Notable capital expenditures planned for this year include the purchase of a new tandem snow plow truck, quarried gravel lift for all of Wolfe Lake Road, a number of road resurfacing projects, municipal infrastructure construction and recreation facility upgrades.

We would like to thank our former Fire Chief, Bob Rice, for his many years of dedicated volunteer service to our community.

From Dave Yemm, Operations Superintendent

Hazardous Waste – Township of Nipissing residents can take all hazardous waste to the North Bay hazardous waste depot located at 112 Patton Street. It is open Wednesday to Saturday, 8:00 a.m. to 6:00 p.m. YEAR ROUND.

Reminders:

Do not disturb municipal roads when performing grading maintenance on private driveways. Disturbing calcium applications on municipal roads leads to limited dust control and pot holes.

Winter Maintenance - please do not plow snow from private driveways or laneways across municipal roads. When this occurs, ditches fill in and are unable to function properly leading to washouts in the spring and icy road conditions in the winter.

From Jeff Peppin, Chief Building Official

Building Official Contact Information

The Chief Building Official position is a shared service with the Municipality of Callander. Jeff Peppin is available to Nipissing residents at the Township Office on Tuesday and Thursday from 8:30am to 4:30pm.

Chief Building Official: Jeff Peppin
Phone: 705-724-2144
Fax: 705-724-5385
Cell: 705-845-1880
Email: cbo@nipissingtownship.com

DISTANCE FROM CENTRES AND LOCATION MAP

City Name	Kilometers	Estimated Driving Time
North Bay	65	45 minutes
Barrie	267	3 hrs.
Ottawa	412	4.5 hrs.
Quebec City	855	9 hrs.
Toronto	390	3.5 hrs.



A BRIEF HISTORY OF THE TOWNSHIP OF NIPISSING

On the south shore of Lake Nipissing, southwest of North Bay, the five kilometer long south bay leads to the mouth of the South River and to Nipissing. Nipissing Village, located approximately five kilometers up the South River was the earliest and largest commercial center in the area before the turn of the twentieth century. The Township was surveyed in the 1870's and incorporated in 1888, annexing Gurd Township in 1970 when it had about 550 residents and Gurd 260. Today the population is close to 1582 people.

The Village has a colourful history, where lumbering, including a sawmill at the mouth of the South River and a steam boat named the Inter-Ocean, built at Chapman's Landing, allowed the town to prosper. Perhaps most noteworthy was the potential in the 1880's for the railway to swing through the Village of Nipissing on its way around the lake to Callander and also tie in with the proposed Montreal-Georgian Bay ship canal coming out of North Bay and cutting across Lake Nipissing. Unfortunately, none of this happened and the Village of Nipissing remains a quiet, peaceful area that serves as a catch basin for residents, who work in the outlying centers, to live because of the lifestyle it offers.

At the Southwest corner of the Township is the Village of Commanda. From a heritage perspective, Commanda served the local population and was a stopping place for weary travelers on the old Nipissing Road from the 1870's until the Grand Trunk Railway came through Trout Creek and drew people there. The Village of Commanda was established on both sides of the Commanda Creek where the creek crosses the Old Nipissing Road.

One of the main buildings is a tall, high old Victorian building which is now the Commanda General Store. It was originally built on Nipissing road in 1885 by James Arthurs, an ambitious 19 year old. The General Store was located about a half kilometer south of the current location. The store eventually became the museum, developed by the Gurd and Area Historical Society in 1980. The store was moved to its present location on Highway 522 and the Nipissing Road in 1934. The museum is a cornerstone for volunteers in the Village of Commanda where numerous special events are hosted annually that attracts visitors from across the province.

Both villages, Nipissing and Commanda, offer a quiet, relaxed lifestyle that residents cherish. This is evident in the number of families that live in homes passed on from generation to generation, keeping the history of the area in tact.



Nipissing Road Circa 1930

THE TOWNSHIP OF NIPISSING COMMUNITY PROFILE

In January of 2008, the Township of Nipissing adopted its first community based **Strategic Plan**. In that Plan, **Mission** and **Vision** statements were articulated along with a number of **beliefs** that the community felt were important. The **Vision** statement certainly encompasses the mission and values that reflect the spirit of the community.

“The Township of Nipissing is a proactive community that respects and protects its history while enhancing and embracing the needs of its citizens and the opportunities provided by its natural resources.”

These natural resources include a number of clean, fresh water lakes such as Wolfe Lake, McQuaby Lake, Ruth Lake and Lake Nipissing, clean air and four distinct seasons. The vast majority of residents lives in the township because of the beautiful surroundings, yet work in the larger centers outside of the township.

When one reviews the Strategic Plan, community input identified four major themes that will provide direction and planning over the next several years. In the **economic development** theme, Council has been proactive in the residential housing area and encouraging the continued growth of the tourism industry through its roots as an historical destination as well as the excellent tourism facilities that exist. Within the **municipal services** section of the Plan, Council is streamlining its communication network, developing its infrastructure and reviewing its administrative services to better meet the needs of its constituents. Because of the rich past and excellent opportunities to live in the “country”, the Plan identified a **marketing** theme that Council is supporting. An example of this is the Investment Readiness Strategy currently being developed that will put Nipissing Township on the internet allowing people to view its profile. The final theme involves **recreation and tourism** where the Township can showcase the many lakes and seasonal activities it offers.

With the completion of the four-lane highway (Highway 11) shortly, the Township of Nipissing is being touted as the next best place to live outside of the Muskokas. It is already a perfect travel destination for hunters, fishing enthusiasts and lovers of the outdoors.

STAFF

MAYOR

Pat Haufe
(Cell) 705-729-5343
705-840-9953

COUNCIL

Tom Piper Deputy Mayor 705-724-5952
Tom Butler 705-724-3640
Dougal Culham 705 724-2140

Liz Smith 705-724-6943

TOWNSHIP OFFICE STAFF

CHIEF ADMINISTRATIVE OFFICER – CLERK	Charles Barton	705-724-2144 Ext 222
TREASURER DEPUTY – CLERK	Kris Croskery-Hodgins	705-724-2144 Ext 221
PLANNING ASSISTANT – E.D.O- C.E.M.C	John-Paul Negrinotti	705-724-2144
OPERATIONS SUPERINTENDENT	Dave Yemm	705-724-2194
ROAD FOREMAN	Pat Elliot	705-724-2194
CHIEF BUILDING OFFICIAL	Jeff Peppin	705-845-1880 Cell 705-724-2144 Ext 223
FIRE CHIEF	Rob Serson	705-752-2772 Station 1 Fire Hall
BY- LAW ENFORCEMENT OFFICER	Frank Kirstein	705-729-1513 705-499-1469 Cell
ANIMAL CONTROL OFFICER	Sandy Briggs	705-724-2676
SEPTIC APPROVALS	North Bay Mattawa Conservation Authority	705-474-5420
TOWNSHIP AUDITOR	BDO Dunwoody	



TRANSPORTATION

Geographically, The Township of Nipissing is a large municipality encompassing 38,746 Hectares. The Township has three provincial highways within its boundaries. Highway 654 from Callander provides easy access to North Bay, Highway 534 leads from Powassan and Highway 522 from Trout Creek. All highways provide fast access to the new four lane Highway 11 and direct connections to Southern Ontario.



Bus



The Municipality of Powassan is the closest location for Ontario Northland.

Ontario Northland
100 Station Road
North Bay, ON
(705) 495-4200

Ontario Northland Southbound and Northbound pick-ups at Stevann's Video in Powassan and at Irma's Restaurant in Trout Creek.

Airport

The Jack Garland Airport in North Bay, only fifty-five (55) minutes away, has several flights daily including flights to Pearson International Airport in Toronto. It also has several smaller airlines and companies for northern and local flights. Contact the Airport for more Information.

50 Terminal St. Suite 1
North Bay, ON P1B 8G2

(705) 474-3020



COMMUNICATIONS



Newspaper and Print Media

Almaguin News	Weekly
Nipissing News	Weekly
North Bay Nugget	Daily
Community Voices	Weekly



Radio Broadcasting

CKAT- AM Radio (600 AM)	705-474-2000
Fox (102.5 FM)	705-474-2000
EZ Rock (100.5 FM)	705-474-2000
CBC Radio One (96.1)	1-800-461-1138
Moose Radio (106.3 FM)	705-475-9991
Christian Radio (103.5)	

EDUCATION

Currently there is one school in the Township. It is known as the South Shore Education Centre and is one of the Near North District Board's elementary schools. The school population as of October 2007 was 125 students from Junior Kindergarten to Grade Eight. South Shore Education Centre was also named one of the Top 25 Schools in Canada by Today's Parent magazine in 2008!

When the students complete Grade Eight they are bussed to secondary schools in the Near North District School Board, Nipissing Parry Sound Catholic District School Board or the Conseil Scolaire Catholique Franco Nord. All secondary schools are located in the City of North Bay with the exception of Almaguin Highland Secondary School which is located just off Hwy 11 between the towns of Sundridge and South River. The bus ride to any one of the secondary schools is approximately forty to forty-five minutes. Post-secondary education is offered at both Nipissing University or Canadore College located in the City of North Bay.

CLIMATE

Like most places in the Near North, the Township of Nipissing tends to be a less humid climate than that found in southern Ontario due somewhat to the distance from the Great Lakes and less warm than some other locations in Northern Ontario due to cooling from Lake Nipissing.

Category	January (average)	July (average)
Normal Maximum Temperature	-8.1°C (17°F)	23.8° C. (75°F)
Normal Minimum Temperature	-18.0°C (0°F)	13.2° C. (56°F)
Average Sunshine	94.5 hours	278.3 hours
Average Precipitation	63 cm snow (23.2 inches)	100 mm. rain (3.8 inches)

GEOGRAPHY

Latitude 46° 24' 0" north

Longitude 79° 34' 6" west

INDUSTRIES / BUSINESSES



Arbortech Forestry Services	RR#2	1-705-724-3640
Bowmans Live Bait	194LakeNipissing Rd	1-705-724-5301
Bait Shop	295 Sunset Cove Rd.	Dale Jones
Bay City Ice	1048 Alsace	1-705-724-2220
Becker's Berry Patch	73 Landing Rd.	www.beckersberrypatch.com 1-705-724-2305
Bush Babies Clothing	619 Birch Grove Dr	1-705-752-1259
Chapmans Landing Cooking Studio	186-A Chapmans Landing Road	1-705-724-2902
Commanda Country Gardens Grow and Sell Perennials hardy to the north	3507 Alsace Road	1-705-729-5714
Culham Trucking	3106 Hwy.# 534	1-705-724-2511
Dudley Installations	3083 Hwy 534	1-705-724-5910
Fish of a lifetime Charters		www.fishofalifetimecharters.com 1-705-752-3944 1-705-840-3944
Giffin Creek Farm – Registered Murray Grey's & Commercial Beef Orders	4069 Alsace Road	1-705-729-5343
Heal Thy Health – dietary transition support	113 Chapmans Landing Road	1-705-724-1144 www.healthyhealth.ca sherry@healthyhealth.ca
Homestead Beef	341 Hamilton Road	1-705-724-2376
Logging	Nipissing Village	Gail King
Matthews Maple Syrup	239 Ski Hill Road	1-705-724-3427

15,000 tap maple sugar operation.	March/April 9-5 daily Open Year Round	dave@matthewsmple.com
Midwife	204 Balsam Lane	1-705-724-2000 Ava Vosu
Nipissing Game Farm	367 Birchgrove Dr.	www.nipissingquail.com 1-705-752-2061
Northern Bug Wear		1-705-729-2115
Perry's Mobile	140 Bear Creek Rd.	Tom Perry 1-705-752-5664
Paul Lamb Trucking	185 Lamb Rd	1-705-729-2014
Plants / Landscaping	3507 Alsace Rd.	James & Judy Merrick
RGF Mining Consultants	488 Swalwells Dr.	1-705-724-6963 rageddes@vianet.ca
Mining Engineering and Technical Services		
Soggy Creek Creative Communications Co.	113 Chapmans Landing Rd.	1-705-724-1144 www.soggycreek.com email@soggycreek.com
Graphic and Web Design Advertising, Marketing and Sign- making, etc.		

SEASONAL



Maple Syrup Producers

Mathews Maple Syrup	239 Ski Hill Road
1-705-724-3427	www.matthewsmple.com
Byers	1384 Alsace Road
Hansman	1474 Alsace Road
Audrey Hughes	3850 Highway 654 Nipissing

Honey Farms

FARMS

In 2007 there were 63 assessed farms in the Township of Nipissing.



TRADES

Contractors

Daryl Storie	1925 Hwy # 534
Evan Hughes	1-705-724-5602
Excavating	1259 Alsace Rd.
Dennis Johnston	3856 H 654
Eric Barber	Sunset Cove Rd.
Ryan Koski / Jennifer McCabe	2899 Hwy#534

Carpenters

Mark Martin	5046 Hwy #534	1-705-729-5862
Stan Piekarski		1-705-724-3432
Tony Bolwerk	Custom Built Homes, Cottages	1-705-724-3389
Carpentry	Boathouses, Docks and Decks.	
Dale	2181 Hwy 534	1-705-724-6363
Cunningham		
John Rowan		3552 Alsace Rd.
John Chellew		1-705-724-5073

Electrician

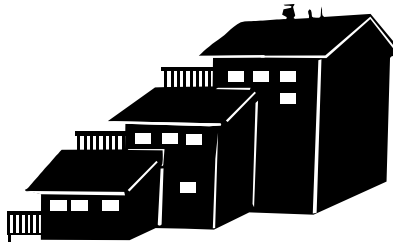
Curran Electric Services	Electrical Contractor and Real Estate Sales person Coldwell Banker Pine Lake Realty	1-705-729-5128 5143 Hwy # 534 curran@on.aibn.com
--------------------------	--	--

Masonry

Block Layer	Robert Barton	5538 Hwy # 534
Terry Hughes Masonry	34 Lake Nipissing Road	1-705-724-9279

BUILDING PERMIT FEES

Residential and Commercial



	Fee Description	Authority	Section	Fee Amount
	<i>TYPE OF PERMIT</i>			
1.	Construction (new, additions, renovations, plumbing, etc.)	Building Code Act	7(c)	\$8.40/\$1000 of construction Minimum Permit Fee \$120.00
2.	Demolition	Building Code Act	7(c)	\$100.00
3.	Conditional	Building Code Act	7(c)	\$120.00 plus \$8.40/\$1000 of construction value
4.	Change of Use	Building Code Act	7(c)	\$120.00 plus \$8.40/\$1000 of construction value
	<i>ADMINISTRATION</i>			
1.	Searching of Records (Building)	Municipal Act	391(1)	\$100.00
2.	Special Inspection	Municipal Act	391(1)	\$150.00
3.	Re-inspection	Municipal Act	391(1)	\$100.00

Note: the Chief Building Official also serves the Municipality of Callander , and is only in the Nipissing Office on Tuesdays and Thursdays. Please contact the Nipissing office for all Nipissing matters, and we encourage you to call the office before you try the cellphone.

LANDFILL



Waste Disposal and Recycling

Recycling depots are located at both landfills during regular hours. For acceptable items please click on the recycling flyer which can be found on the township website main page under “Garbage and Recycling” The hours of operation for waste disposal sites located in the Township of Nipissing are as follows:

**Concession 7, Lot 21
(Wolfe Lake Road and Highway 534)**

Hours of Operation:
Saturday - 10:00 am to 6:00 pm
Monday - 10:00 am to 6:00 pm
Thursday - 4:00 pm to 8:00 pm

**Concession 15, Lot 5
(Hwy 654 near Sunset Cove Road)**

Hours of Operation:
Friday - 10:00 am to 6:00 pm
Sunday - 10:00 am to 6:00 pm
Wednesday - 4:00 pm to 8:00 pm

The landfills will be closed on all Statutory Holidays and on Remembrance Day when it falls during the week (Monday to Friday).

Note: “Landfill Entry Permit” required for access to the dumps. These cards are issued annually and are mailed in the final tax bills to all landowners. If you require further information please contact the Township Office.

Hazardous Waste Disposal

The Township of Nipissing has an agreement with the City of North Bay to have all Household Hazardous Waste including electronics accepted at their depot.

Hours of Operation:

All year round
Wednesday to Saturday
From 8:00 am to 6:00 pm.

Location

112 Patton St.

Tipping Fees:

\$5.00	Household appliances
\$5.00	Pickup or small trailer loads of brush
\$5.00	Pickup or small trailer loads of residential waste
\$25.00	Pickup or small trailer loads of shingles
\$75.00	Pickup or trailer loads of non-residential waste
\$4.00 each	Car or pickup tires
\$6.00 each	Car or pickup tires with rims
\$10.00 each	Large truck tires
\$5.00	Fridge Tagged
\$35.00	Fridge - Untagged
\$5.00	Freezer - Tagged
\$35.00	Freezer - Untagged
\$5.00	Half-Ton Truck
\$110.00	Single Axle
\$180.00	Tandem Truckloads
\$180.00	Dumpster or Tri-Axle Truckloads (12 yards and up)
\$50.00	Tandem Trailer

Accepted Recyclable Materials – NO RECYCLABLES IN REGULAR WASTE!

Cardboard	Empty and flatten boxes before placing cardboard in recycling station. Dry food boxes and other paperboard also accepted in this bin.
Paper	Newspapers, white papers, magazines, catalogs, phone books and flyers.
Plastics	Pop cans, tins, plastics 1 – 7, electronics, grocery bags, empty oil jugs, soda bottles, water bottles, styrofoam etc. Please place electronics in this bin.
Glass	Please put glass in with the plastics.

****NEW**** We now **ACCEPT Electronics, Glass and Styrofoam.** Your involvement with this recycling initiative will prolong the life of our dumps and help the environment.

****We encourage you to download our recycling flyer, which is located on the webpage under “Garbage and Recycling”****

EMERGENCY SERVICES

911 Services are available throughout the entire Municipality

AMBULANCE

12 hours per day service is available from 705-474-7400
Powassan and 24 hrs. per day from North
Bay

ONTARIO PROVINCIAL POLICE

24 hours toll free service 1-888-310-1122

FIRE STATIONS

Mission Statement

“The primary mission of the Township of Nipissing Fire Department is to provide a range of programs to protect the lives and property of the inhabitants of the Township of Nipissing from the adverse effects of fires, sudden medical emergencies or exposure to dangerous conditions created by man or nature.”



FIRE FIGHTERS

Fire Chief:

Rob Serson

Fire Fighters:

Carrie Barratt
Will Bateman
Jeff Dane
Chris Heasman
Andrew Honeysett
Kim Howard
Shawn Hughes
Kevin Martin



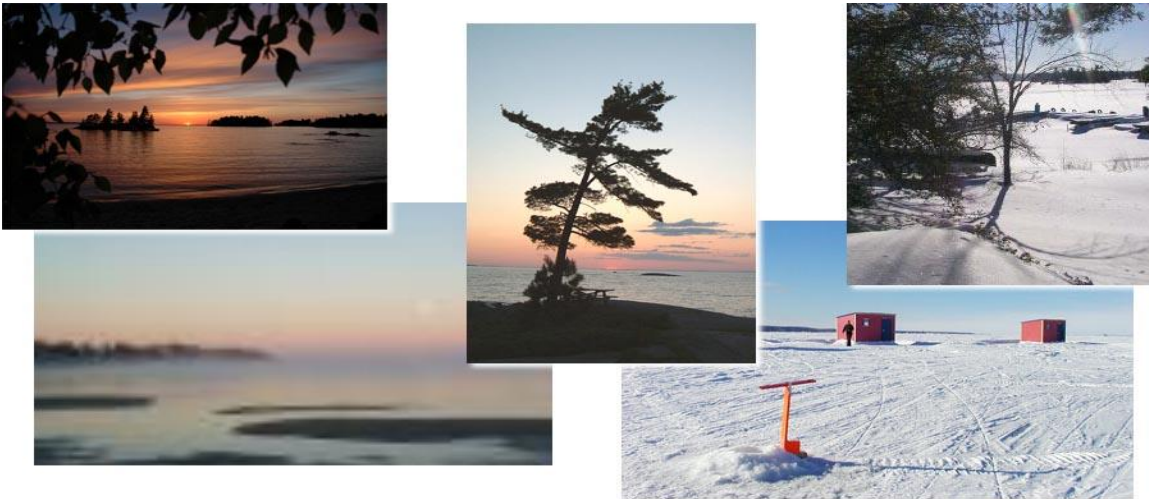
Sharon Martin
Paul Nelson
Mike Poulin
Ryan Rice
Denise Scott
James Scott
George Taylor
John Tomlinson
Chris Topham
Shannon Unger
Nyles Watson

RESORTS



Adventure Camp Ohio	239 Chapmans Landing Rd.	www.adventurecampohio.com 1-705-724-2086 1-861-366-5556
Bear Creek Cottages	316 Bear Creek Rd.	www.bearcreekcottages.com 1-888-246-5026 1-705-752-1157
Gniezno Camp and Cottages	879 Lake Nipissing Road	1-705-724-9724
Greening Bay Cottages	116 Greening Bay Road	1-705-752-3558 1-866-535-0518
Lake Point Cottages	137 Sandy Bay Rd. 1-705-752-1207	www.lakepointcottages.on.ca 1-705-752-1207
McQuaby Lake Resort	43 McQuaby Lake Rd.	www.mcquaby.com 1-705-729-5414 1-905-682-3898(Off Season)
Nipissing Lodge	Lake Nipissing	www.nipissing.com/nipissinglodge 1-705-724-2939 1-888-246-0782

Piebird Bed and Breakfast	113 Chapmans Landing Rd.	www.piebird.ca 1-705-724-1144 sherry@piebird.ca stay@piebird.ca
Promised Land Camp	152 Promised Land Rd.	www.promisedlandcamp.net 1-705-724-1648 1-888-647-7742
Rockview Camp	99 Rockview Rd.	www.rockview.on.ca 1-705-752-3067 1-877-752-3067
Ruth Haven Cottages	44 Ruth Haven Dr.	1-705-724-3149
Sandy Bay Cottages	39 Sandy Bay Rd.	www.sandybaycottages.ca 1-705-752-1050 1-877-387-0868
Settlers Guest House Bed and Breakfast	5260 Hwy 534	www.settlersguesthouse.com 1-705-729-1633
Snowfari Adventures	401 Stonecutters Rd.	www.snowfariadventures.com 1-866-242-0825 1-705-724-9698
South Shore Camping and Ice Condos	678 Stonecutters Road	1-705-752-4674 www.nipissingicefishing.com
Sunlit Bay Cottages	123 Sandy Bay Rd.	www.noto.net/sunlitbay.com 1-705-752-1040
Sunset Cove Lodge	33A Sandy Bay Road	www.sunsetcovelodge.com 1-705-752-2820
Tom Rae Lodge Ltd.	534 Lake Nipissing Rd.	www.tomraelodge.com 1-705-724-3524 sales@tomraelodge.com
Waltonian Inn Resort	550 Waltonian Drive	www.waltonian-inn.com 1-705-752-2060 1-800-268-9025



PUBLIC FACILITIES

Public Beaches

Wolfe Lake Beach
Links Beach, Lake Nipissing

Boat Launches

South River Chapman’s Landing Dock and Launch
McQuaby Lake Boat Launch
Wades Landing Fish Bay Government Dock

MARINAS

Hunters Bay Marina “Sales”: Boats and Mercury Motors, Trailers and Service.	125 Hunters Bay Road	www.huntersbaymarine.ca 1-705-752-3666
Fish Bay Marina	502 Lake Nipissing Road	1-705-724-3130
Wades Landing Marina	488-B Lake Nipissing Road	1-705-724-2699

CEMETERIES

Township of Nipissing

- Union Cemetery In Nipissing
- Alsace Cemetery
- Commanda Cemetery
- Barber Cemetery

MUSEUMS



Nipissing Township Museum	436 Highway 654	www.nnhg.ca 705-724-2938
Commanda Heritage Centre	4077 Highway 522	705-729-2113 www.commanda.ca

POST OFFICES

Commanda Post Office	22 Rye Road	705-729-5980
Nipissing Post Office	4339 Highway 654	705-724-6943

COMMUNITY CENTRES

Nipissing Community Centre: Owned and operated by The Township of Nipissing.
2381 Highway 654, 724-2144 for rental info.

Commanda Community Centre: 705-729-5437 for rental info.

CHURCHES

Evangelical Lutheran Church	14 Old Nipissing Road
St. John's Roman Catholic Church	3352 Alsace Road
Nipissing Knox United Church	11 Blake Street

STORES / GENERAL SUPPLIES



Young's South Shore Centre LCBO	2536 Highway 654 Nipissing	705-752-1480 www.youngssouthshore.ca
Storie's Store and Gas Bar LCBO	2633 Highway 534 Nipissing	705-724-5684
Nipissing Supply Store	159 Pine Drive	705-752-4837

DOG TAG - LICENSE

Dog Tags are available at the Township Office, and should be purchased annually, by March 31st. Rates:

First dog	\$10.00
Second dog	\$20.00
Third dog	\$30.00
Kennel License	\$50.00

For all animal control inquiries, please contact:

Sandy Briggs, Animal Control Officer
724-2676.

TOWNSHIP OF NIPISSING COMMUNITY CENTRE

The Community Centre is located at 2381 Hwy 654.

Type of Use and User Fees

Rental Purpose	Cost
Liquor Event 6pm to 2am <i>*does not include kitchen*</i>	\$250** additional items as listed
Hall Rental (meetings, gatherings, etc.) <i>*does not include kitchen*</i>	\$50 ½ day \$100 full day
Funeral Luncheons (flat fee includes kitchen)	\$50

Kitchen Rental	\$50
Damage Deposit (refundable after event)	\$100 Liquor Events \$75 Hall/Kitchen Rentals
Key Deposit (refundable with return of key)	\$25

**If lessee runs the bar, the bartender must have a Server Intervention Program Certificate or Smart Serve Certificate.

**Third Party Alcohol Liability Insurance - for insurance coverage and protection for the sale and supply of alcoholic beverages. This policy must name the Corporation of the Township of Nipissing as an additional insured per coverage and be in the amount of \$2,000,000.00 based on Bodily Injury Liability and Property Damage.

**Permit applications need to be submitted 10 days prior to the event to the LCBO on Algonquin Avenue. Liquor License numbers to submit are Hall 4287 and Permit 7274. This permit must be posted in the bar area during the event and the permit holder is to be present at all times to ensure that all regulations are complied with. Copies of the Liquor License and the Liability Insurance are to be submitted to the Township Office prior to the issuance of the key.

The Hall is licensed by the LCBO for a MAXIMUM OF 130 PERSONS.

Rental Information

- All rental fees are based on the lessee arranging the hall and leaving it clean and the way it was found by 1:00 p.m. the day following the event. *All tables and chairs are to be left for storage by maintenance personnel.*
- Hall to be left clean with obvious spills wiped, surfaces wiped down, and debris swept and disposed of.
- To refrain from the use of confetti on the premises. No tape, tacks or nails can be used for decorating the hall. Decorating should be done with masking tape or sticky putty only. Any damages caused by nails, tacks, or tape will be repaired and billed to the Special Occasion Permit Holder or Event Organizer.
- When moving tables and chairs, please avoid dragging them along the floor when possible.
- Garbage and decorations are to be removed after the event. Garbage is to be removed from the building and placed in the garbage bin located outside the building.

- Key can be obtained from the Township office and must be returned as soon as possible. A mail slot in the door of the office is available for key drop off during non-office hours.
- All liquor must be removed from the hall the evening of the event in accordance with the SOP Permit.
- Persons renting the hall will be responsible for any damages to the building, any fixtures and/or furniture, and any broken or missing equipment in the kitchen, if used, regardless of who actually causes the damage or loss, and will be billed accordingly.
- That the Township of Nipissing shall not be liable for any damages to or loss of any property brought into the premises in conjunction with the function by the Special Occasion Permit Holder or Event Organizer named herein or their members, officers, employees, agents, or contractors or any person who attends the function.
- To supervise and control all persons in attendance at the function and to restrict such persons to the premises.
- To abide by the capacities for persons posted or made known for the premises.
- Not to contravene any statutes or regulations of the Province of Ontario and any by-laws of the Township of Nipissing.
- To be responsible for providing your own bar cups, ice, mix and tickets.
- The Township of Nipissing reserves the right to cancel the Agreement upon notification to the Special Occasion Permit Holder or Event Organizer at least ONE WEEK prior to the date of the function, in which event any deposit paid shall be refunded to the Special Occasion Permit Holder or Event Organizer and the Township of Nipissing shall not be liable to the Special Occasion Permit Holder or Event Organizer for any loss or damages.
- To protect, defend, indemnify and save the Township of Nipissing harmless from all claims actions and proceeds, including any costs and expenses incurred by the Township of Nipissing thereby, for loss, damage or injury, including death, to any person or persons and to any property arising in connection with the function as result of any act or omission of the Special Occasion Permit Holder or Event Organizer named hereon or their members, officers, employees, agents or contractors or any person who attends the function.
- To ensure the hall is left in a secured state and to return the key to the Township Office on the first business day following the function.

Bookings / Payment

Hall bookings may be made at the Township Office.

Cheques should be made payable to the "Township of Nipissing" and forwarded with a completed contract to:

Nipissing Township Office
Nipissing, ON P0H 1W0
Phone: (705) 724-2144

TOWNSHIP OF NIPISSING FITNESS CENTRE

- The fitness center is located at the Community Centre.
- Swipe Card access to the gym will be available 7:00 a.m. until 11:00 p.m. daily.
- Swipe Cards are available with membership for an additional \$10 refundable deposit.
- Supervised access, Monday to Friday - 6:00 p.m. till 8:00 p.m.
- Gift certificates are available.
- For additional information, please contact John Chellew, at 705-724-5073.

Cost	Term
\$175.00	Per year
\$90.00	6 months
\$50.00	3 months
\$20.00	Per month
\$10.00	Per week
\$5.00	Per night
\$150.00 Seniors	Per year
\$150.00 Students	Per year
\$325.00 Family of 2	Per year
\$10.00 (Refundable)	Per card

Note: The gym will be unavailable for Swipe Card Access when the Community Centre is rented for an event. Notice will be posted for the dates in advance.

