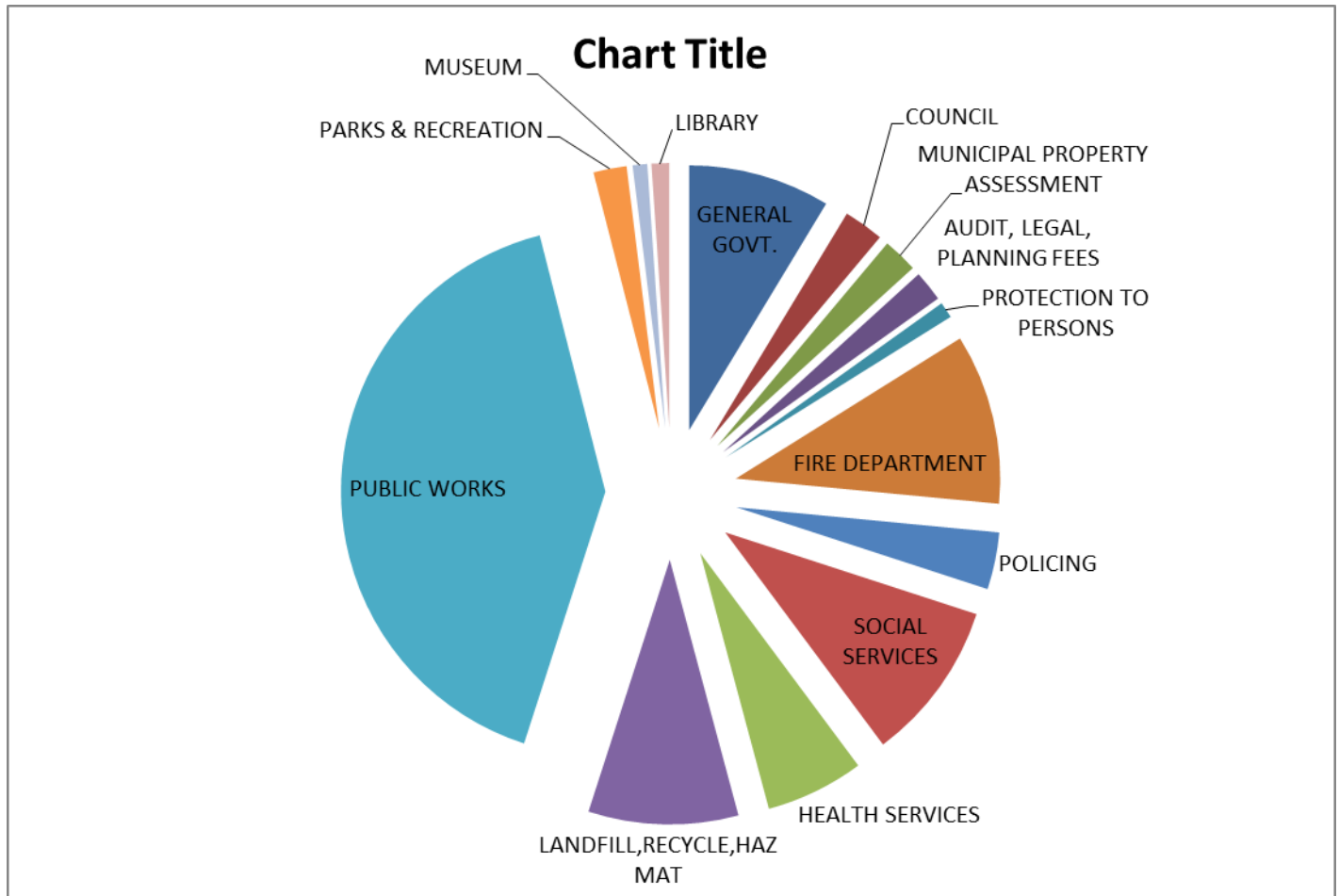


## Where Do Your Tax Dollars Go?

The Tax Levy is apportioned to all budget categories.

A sample of the 2013 Budget amounts is represented in the following chart.



**PUBLIC WORKS:** Includes road construction and repairs, snow removal, sanding, grading, dust suppression, ditching, culverts, roadside cutting and brushing, machine maintenance and repair, road signs, sand & gravel supply and application, street lights and surface treatment.

**PARKS & RECREATION:** Operation and maintenance of the Community Centre, Fitness Centre, Outdoor Rink, Heritage Park and Public Beaches.

**MUSEUM:** Operation, maintenance and Capital Improvements.

**LIBRARY:** Shared Facility Levy.

COUNCIL: Stipend and expenses.

MUNICIPAL PROPERTY ASSESSMENT: Levy from the Municipal Property Assessment Corporation.

AUDIT, LEGAL AND PLANNING FEES.

PROTECTION TO PERSONS: Building Department, Lottery Licencing, By-Law Enforcement and Animal Control Services.

FIRE DEPARTMENT: Operation, maintenance and Capital Improvements.

POLICING: Ontario Provincial Police levy.

SOCIAL SERVICES: Levy from the District of Parry Sound Social Services Administration Board for Child Care Assistance, Ontario Works and housing. Levy for Eastholme, Home for the Aged operation and capital projects.

HEALTH SERVICES: Care and maintenance of cemeteries, Health Unit levy, Land Ambulance levy, North Bay Regional Health Centre annual donation.

LANDFILL: operation and maintenance including closure reserve, Recycling program and Hazardous Waste Depot fees.

GENERAL GOVERNMENT: Office operation and administration.

For more information on these items or the budget process, please contact the Township Office at 705-724-2144.